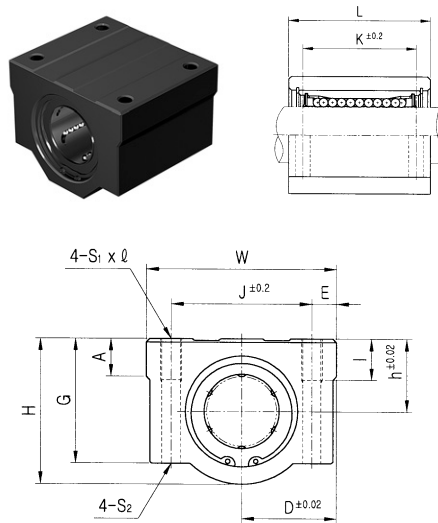


SC ALUMINUM CASE UNIT

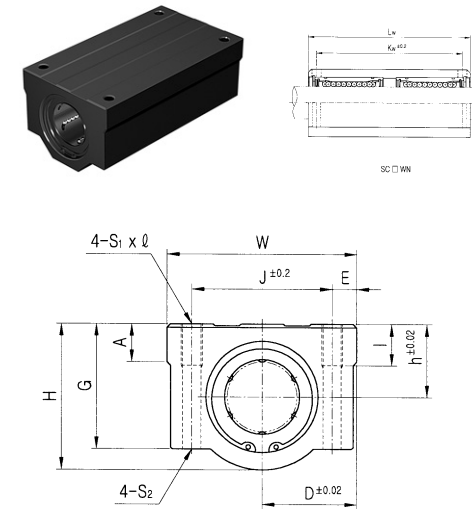


Aluminum Case Unit	SC	20	UU	N	-	A	S
Nominal Shaft Diameter							
Seal	Blank : No Seal U : One Side Seal UU : Both Side Seal						
New type							
Retainer	Blank : Resin retainer(Standard) A : Steel retainer(High temperature)						
Ball type (by corrosion resistance)	Blank : High carbon bearing steel ball (standard) S : Stainless steel ball						

PART NUMBER	L/B	h	D	W	H	G	A	J	E	S ₁ ×l	S ₂	K	L	BASIC LOAD RATING(N) DYNAMIC(C)	STATIC(C ₀)	WEIGHT (gf)
SC8-B	LM8UU	11	17	34	22	18	6	24	5	M4×8	Φ3.4	18	30	260	400	56
SC10-B	LM10UU	13	20	40	26	21	8	28	6	M5×10	Φ4.3	21	35	370	540	90
SC12-B	LM12UU	15	22	44	30	24.5	8	33	5.5	M5×10	Φ4.3	26	39	410	590	112
SC12N-B	LM12UU	15	21	42	28	24	7.4	30.5	5.5	M5×12	Φ4.3	26	36	410	590	112
SC13-B	LM13UU	15	22	44	30	24.5	8	33	5.5	M5×10	Φ4.3	26	39	500	770	123
SC16-B	LM16UU	19	25	50	38.5	32.5	9	36	7	M5×12	Φ4.3	34	44	770	1170	189
SC20-B	LM20UU	21	27	54	41	35	11	40	7	M6×12	Φ5.2	40	50	860	1370	237
SC25-B	LM25UU	26	38	76	51.5	41	12	54	11	M8×18	Φ6.8	50	67	980	1560	555
SC30-B	LM30UU	30	39	78	59.5	49	15	58	10	M8×18	Φ6.8	58	72	1560	2740	685
SC35-B	LM35UU	34	45	90	68	54	18	70	10	M8×18	Φ6.8	60	80	1660	3130	1100
SC40-B	LM40UU	40	51	102	78	62	20	80	11	M10×25	Φ8.6	60	90	2150	4010	1600
SC50-B	LM50UU	52	61	122	102	80	24	100	11	M10×25	Φ8.6	80	110	3820	7930	3350

Note 1) Dynamic load rating is based on the nominal life of 50km.
In case of 100km, C on the table need to be divided by 1.26
Ex) LM12's 50km basis dynamic load rating C = 410N
LM12's 100km basis dynamic load rating C₁₀₀ = 410 / 1.26 = 325.40N
Note 2) Based on the weight of resin retainer
Note 3) Dimension : mm

SCW ALUMINUM CASE UNIT LONG

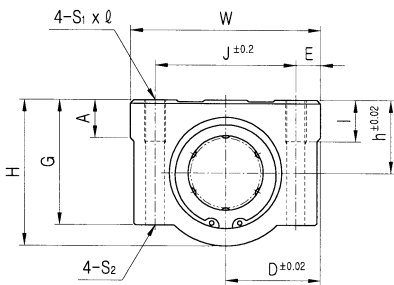
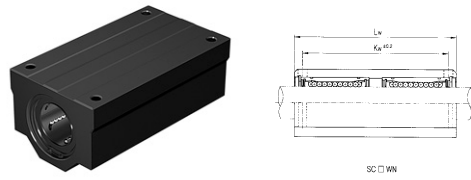


Aluminum Case Unit	SC	20	W	UU	-	A	S
Nominal Shaft Diameter							
Long type (for high load)							
Seal	Blank : No Seal U : One Side Seal UU : Both Side Seal						
Retainer	Blank : Resin retainer(Standard) A : Steel retainer(High temperature)						
Ball type (by corrosion resistance)	Blank : High carbon bearing steel ball (standard) S : Stainless steel ball						

PART NUMBER	L/B	h	D	W	H	G	A	J	E	S ₁ ×l	S ₂	K _w	L _w	BASIC LOAD RATING(N) DYNAMIC(C)	STATIC(C ₀)	WEIGHT (gf)
SC8W-B	LM8U	11	17	34	22	18	6	24	5	M4×8	Φ3.4	42	58	410	800	94
SC10W-B	LM10U	13	20	40	26	21	8	28	6	M5×10	Φ4.3	46	68	590	1080	147
SC12W-B	LM12U	15	22	44	30	24.5	8	33	5.5	M5×10	Φ4.3	64	77	650	1180	220
SC13W-B	LM13U	15	22	44	30	24.5	8	33	5.5	M5×10	Φ4.3	64	77	800	1540	245
SC16W-B	LM16U	19	25	50	38.5	32.5	9	36	7	M5×12	Φ4.3	79	89	1230	2340	376
SC20W-B	LM20U	21	27	54	41	35	11	40	7	M6×12	Φ5.2	90	100	1370	2470	476
SC25W-B	LM25U	26	38	76	51.5	41	12	54	11	M8×18	Φ6.8	119	136	1560	3120	1115
SC30W-B	LM30U	30	39	78	59.5	49	15	58	10	M8×18	Φ6.8	132	146	2490	5480	1375
SC35W-B	LM35U	34	45	90	68	54	18	70	10	M8×18	Φ6.8	140	160	2650	6260	2200
SC40W-B	LM40U	40	51	102	78	62	20	80	11	M10×25	Φ8.6	150	180	3440	8020	3200
SC50W-B	LM50U	52	61	122	102	80	24	100	11	M10×25	Φ8.6	200	230	6110	15860	6720

Note 1) Dynamic load rating is based on the nominal life of 50km.
In case of 100km, C on the table need to be divided by 1.26
Ex) LM12's 50km basis dynamic load rating C = 410N
LM12's 100km basis dynamic load rating C₁₀₀ = 410 / 1.26 = 325.40N
Note 2) Based on the weight of resin retainer
Note 3) Dimension : mm

SCW_N ALUMINUM CASE UNIT LONG

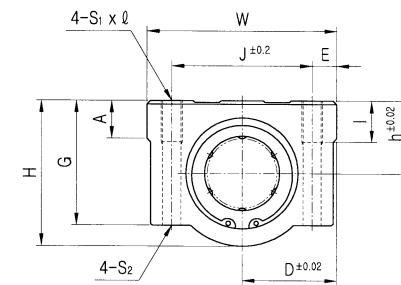
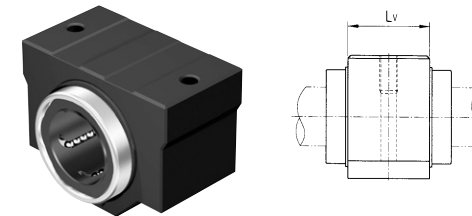


Aluminum Case Unit	SC	20	W	UU	N	-	A	S
Nominal Shaft Diameter								
Long type (for high load)								
Seal	Blank : No Seal U : One Side Seal UU : Both Side Seal							
New type								
Retainer	Blank : Resin retainer(Standard) A : Steel retainer(High temperature)							
Ball type (by corrosion resistance)	Blank : High carbon bearing steel ball (standard) S : Stainless steel ball							

PART NUMBER	L/B	h	D	W	H	G	A	J	E	S ₁ ×l	S ₂	K _w	L _w	BASIC LOAD RATING(N) DYNAMIC(C) STATIC(C ₀)	WEIGHT (g)	
SC8WN-B	LM8U×2	11	17	34	22	18	6	24	5	M4×8	Φ3.4	42	58	410	800	94
SC10WN-B	LM10U×2	13	20	40	26	21	8	28	6	M5×12	Φ4.3	46	68	590	1080	147
SC12WN-B	LM12U×2	15	21	42	28	24	7.4	30.5	5.5	M5×12	Φ4.3	50	70	650	1180	220
SC13WN-B	LM13U×2	15	22	44	30	24.5	8	33	5.5	M5×12	Φ4.3	50	75	800	1540	245
SC16WN-B	LM16U×2	19	25	50	38.5	32.5	9	36	7	M5×12	Φ4.3	60	85	1230	2340	376
SC20WN-B	LM20U×2	21	27	54	41	35	11	40	7	M6×12	Φ5.2	70	96	1370	2470	476
SC25WN-B	LM25U×2	26	38	76	51.5	41	12	54	11	M8×18	Φ6.8	100	130	1560	3120	1115
SC30WN-B	LM30U×2	30	39	78	59.5	49	15	58	10	M8×18	Φ6.8	110	140	2490	5480	1375
SC35WN-B	LM35U×2	34	45	90	68	54	18	70	10	M8×18	Φ6.8	120	155	2650	6260	2200
SC40WN-B	LM40U×2	40	51	102	78	62	20	80	11	M10×25	Φ8.6	140	175	3440	8020	3200
SC50WN-B	LM50U×2	52	61	122	102	80	24	100	11	M10×25	Φ8.6	160	215	6110	15860	6720

Note 1) Dynamic load rating is based on the nominal life of 50km.
In case of 100km, C on the table need to be divided by 1.26
Ex) LM12's 50km basis dynamic load rating C = 410N
LM12's 100km basis dynamic load rating C₁₀₀ = 410 / 1.26 = 325.40N
Note 2) Based on the weight of resin retainer
Note 3) Dimension : mm

SCV ALUMINUM CASE UNIT

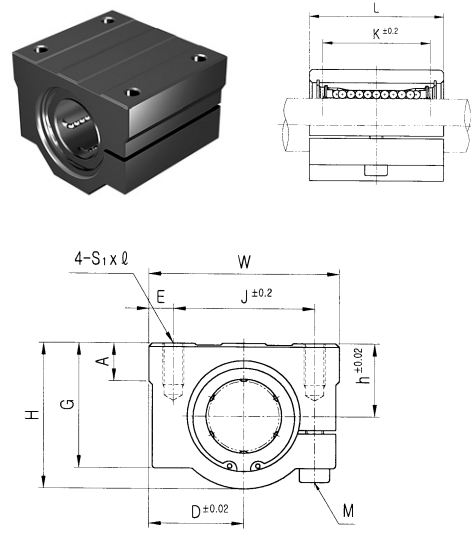


Aluminum Case Unit	SC	20	V	UU	-	A	S
Nominal Shaft Diameter							
Compact type							
Seal	Blank : No Seal U : One Side Seal UU : Both Side Seal						
Retainer	Blank : Resin retainer(Standard) A : Steel retainer(High temperature)						
Ball type (by corrosion resistance)	Blank : High carbon bearing steel ball (standard) S : Stainless steel ball						

PART NUMBER	L/B	h	D	W	H	G	A	J	E	S ₁ ×l	S ₂	L _v	BASIC LOAD RATING(N) DYNAMIC(C) STATIC(C ₀)	WEIGHT (g)	
SC8V-B	LM8UU	11	17	34	22	18	6	24	5	M4×8	Φ3.4	15.4	260	400	36
SC10V-B	LM10UU	13	20	40	26	21	8	28	6	M5×10	Φ4.3	19.5	370	540	63
SC12V-B	LM12UU	15	22	44	30	24.5	8	33	5.5	M5×10	Φ4.3	20.5	410	590	74
SC12VN-B	LM12UU	15	21	42	28	24	7.4	30.5	5.5	M5×12	Φ4.3	20.5	410	590	74
SC13V-B	LM13UU	15	22	44	30	24.5	8	33	5.5	M5×10	Φ4.3	20.5	500	770	85
SC16V-B	LM16UU	19	25	50	38.5	32.5	9	36	7	M5×12	Φ4.3	23.5	770	1170	132
SC20V-B	LM20UU	21	27	54	41	35	11	40	7	M6×12	Φ5.2	27.4	860	1370	170
SC25V-B	LM25UU	26	38	76	51.5	41	12	54	11	M8×18	Φ6.8	37.4	980	1560	405
SC30V-B	LM30UU	30	39	78	59.5	49	15	58	10	M8×18	Φ6.8	40.9	1560	2740	495
SC35V-B	LM35UU	34	45	90	68	54	18	70	10	M8×18	Φ6.8	45.4	1660	3130	790
SC40V-B	LM40UU	40	51	102	78	62	20	80	11	M10×25	Φ8.6	56.4	2150	4010	1220
SC50V-B	LM50UU	52	61	122	102	80	24	100	11	M10×25	Φ8.6	68.9	3820	7930	2300

Note 1) Dynamic load rating is based on the nominal life of 50km.
In case of 100km, C on the table need to be divided by 1.26
Ex) LM12's 50km basis dynamic load rating C = 410N
LM12's 100km basis dynamic load rating C₁₀₀ = 410 / 1.26 = 325.40N
Note 2) Based on the weight of resin retainer
Note 3) Dimension : mm

SCJ ADJUSTABLE ALUMINUM CASE UNIT

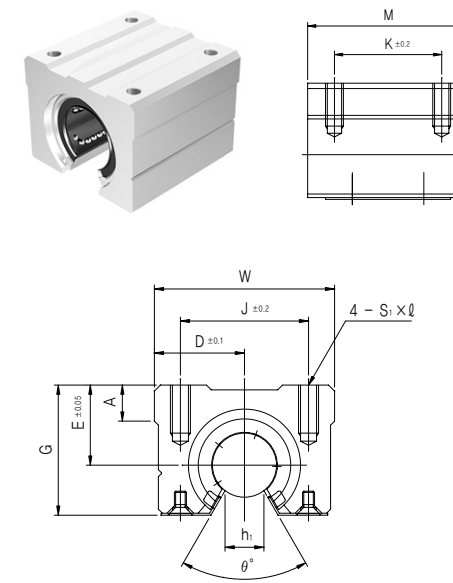


Aluminum Case Unit(Adjustable type)	SCJ	20	UU	-	A	S
Nominal Shaft Diameter						
Seal	Blank : No Seal U : One Side Seal UU : Both Side Seal					
Retainer	Blank : Resin retainer(Standard) A : Steel retainer(High temperature)					
Ball type (by corrosion resistance)	Blank : High carbon bearing steel ball (standard) S : Stainless steel ball					

PART NUMBER	L/B	h	D	W	H	G	A	J	E	S1×l	K	L	M	BASIC LOAD RATING(N) DYNAMIC(C)	STATIC(Cs)	OUTER DIAMETER	WEIGHT (g)
SCJ10UU	LM10UUAJ	13	20	40	26	21	8	28	6	M5×12	21	35	M4	370	540	Φ10	90
SCJ12UU	LM12UUAJ	15	21	42	28	24	7.4	30.5	5.75	M5×12	26	36	M4	410	590	Φ12	112
SCJ13UU	LM13UUAJ	15	22	44	30	24.5	8	33	5.5	M5×12	26	39	M4	500	770	Φ13	123
SCJ16UU	LM16UUAJ	19	25	50	38.5	32.5	9	36	7	M5×12	34	44	M4	770	1170	Φ16	189
SCJ20UU	LM20UUAJ	21	27	54	41	35	11	40	7	M6×12	40	50	M5	860	1370	Φ20	237
SCJ25UU	LM25UUAJ	26	38	76	51.5	41	12	54	11	M8×18	50	67	M6	980	1560	Φ25	555
SCJ30UU	LM30UUAJ	30	39	78	59.5	49	15	58	10	M8×18	58	72	M6	1560	2740	Φ30	685
SCJ35UU	LM35UUAJ	34	45	90	68	54	18	70	10	M8×18	60	80	M6	1660	3130	Φ35	1100
SCJ40UU	LM40UUAJ	40	51	102	78	62	20	80	11	M10×25	60	90	M8	2150	4010	Φ40	1600
SCJ50UU	LM50UUAJ	52	61	122	102	80	24	100	11	M10×25	80	110	M8	3820	7930	Φ50	3350

Note 1) Dynamic load rating is based on the nominal life of 50km.
In case of 100km, C on the table need to be divided by 1.26
Ex) LM12's 50km basis dynamic load rating C = 410N
LM12's 100km basis dynamic load rating $C_{100} = 410 / 1.26 = 325.40N$
Note 2) Based on the weight of resin retainer
Note 3) Dimension : mm

SBR ALUMINUM CASE UNIT OPEN

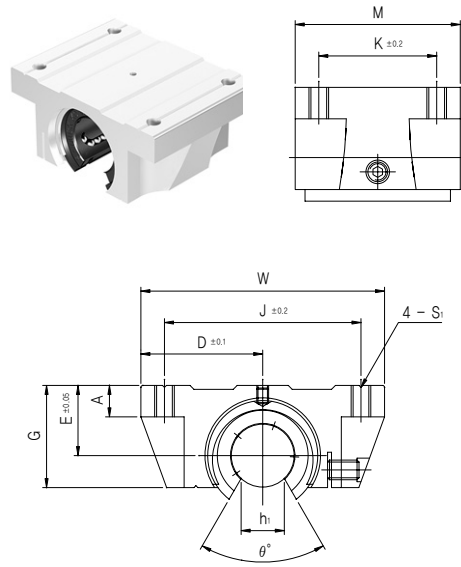


Aluminum Case Unit(Open type)	SBR	20	UU	-	A	S
Nominal Shaft Diameter						
Seal	Blank : No Seal U : One Side Seal UU : Both Side Seal					
Retainer	Blank : Resin retainer(Standard) A : Steel retainer(High temperature)					
Ball type (by corrosion resistance)	Blank : High carbon bearing steel ball (standard) S : Stainless steel ball					

PART NUMBER	L/B	D	W	G	θ	A	M	S×l	h	E	J	K	BASIC LOAD RATING(N) DYNAMIC(C)	STATIC(Cs)	WEIGHT (g)
SBR16UU	LM16UUOP	22.5	45	33	80°	9	45	M5×12	11	20	32	30	770	1170	0.15
SBR20UU	LM20UUOP	24	48	39	60°	11	50	M6×12	11	23	35	35	860	1370	0.20
SBR25UU	LM25UUOP	30	60	47	50°	14	65	M6×12	12	27	40	40	980	1560	0.45
SBR30UU	LM30UUOP	35	70	56	50°	15	70	M8×18	15	33	50	50	1560	2740	0.63
SBR35UU	LM35UUOP	40	80	63	50°	18	80	M8×18	17	37	55	55	1660	3130	0.92
SBR40UU	LM40UUOP	45	90	72	50°	20	90	M10×20	20	42	65	65	2150	4010	1.33
SBR50UU	LM50UUOP	60	120	91	50°	25	110	M10×20	25	53	94	80	3820	7930	3.00

Note 1) Dynamic load rating is based on the nominal life of 50km.
In case of 100km, C on the table need to be divided by 1.26
Ex) LM12's 50km basis dynamic load rating C = 410N
LM12's 100km basis dynamic load rating $C_{100} = 410 / 1.26 = 325.40N$
Note 2) Based on the weight of resin retainer
Note 3) Dimension : mm

TBR ALUMINUM CASE UNIT OPEN

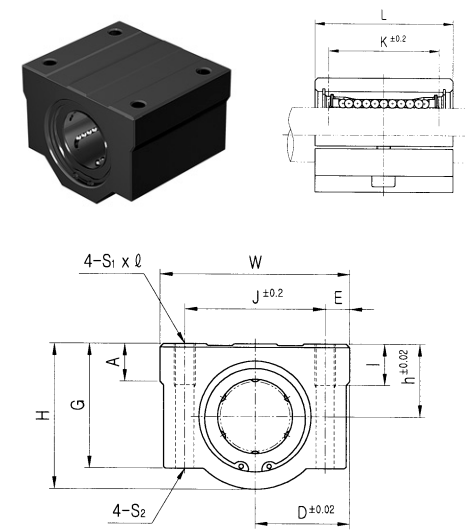


Aluminum Case Unit(Open type)	TBR	20	UU	-	A	S
Nominal Shaft Diameter						
Seal	Blank : No Seal U : One Side Seal UU : Both Side Seal					
Retainer	Blank : Resin retainer(Standard) A : Steel retainer(High temperature)					
Ball type (by corrosion resistance)	Blank : High carbon bearing steel ball (standard) S : Stainless steel ball					

PART NUMBER	L/B	D	W	G	θ	A	M	S ₁	h ₁	E	JK	BASIC LOAD RATING(N) DYNAMIC(C)	STATIC(C ₀)	WEIGHT (g)
TBR16UU	LM16UUOP	31	62	26	80°	8	42	M5	11	18	50 30	392	490	0.18
TBR20UU	LM20UUOP	34	68	31	60°	10	51	M6	11	21	54 37	784	1176	0.3
TBR25UU	LM25UUOP	41	82	41	50°	12	65	M8	12	28	65 50	1568	2352	0.6
TBR30UU	LM30UUOP	45.5	91	48	50°	12	75	M8	15	34	75 60	1764	2940	0.9

Note 1) Dynamic load rating is based on the nominal life of 50km.
In case of 100km, C on the table need to be divided by 1.26
Ex) LM12's 50km basis dynamic load rating C = 410N
LM12's 100km basis dynamic load rating C₁₀₀ = 410 / 1.26 = 325.40N
Note 2) Based on the weight of resin retainer
Note 3) Dimension : mm

SCE ALUMINUM CASE UNIT

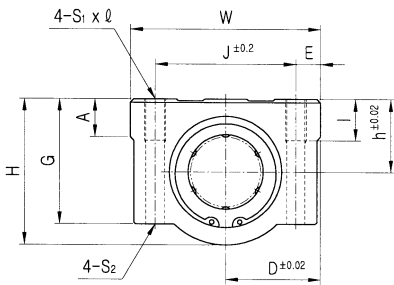
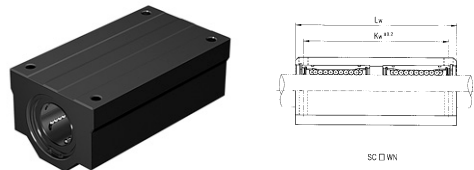


European Standard Aluminum Case Unit	SCE	20	UU	-	A	S
Nominal Shaft Diameter						
Seal	Blank : No Seal U : One Side Seal UU : Both Side Seal					
Retainer	Blank : Resin retainer(Standard) A : Steel retainer(High temperature)					
Ball type (by corrosion resistance)	Blank : High carbon bearing steel ball (standard) S : Stainless steel ball					

PART NUMBER	L/B	L	h	D	W	H	G	A	J	E	S ₁ ×l	S ₂	K	BASIC LOAD RATING(N) DYNAMIC(C)	STATIC(C ₀)	WEIGHT (g)
SCE8-B	LME8UU	30	11	17	34	22	18	6	24	5	M4×8	Φ3.4	18	260	400	60
SCE12-B	LME12UU	39	15	22	44	30	24.5	8	33	5.5	M5×10	Φ4.3	26	410	590	118
SCE16-B	LME16UU	44	19	25	50	38.5	32.5	9	36	7	M5×12	Φ4.3	34	770	1170	180
SCE20-B	LME20UU	53	21	27	54	41	35	11	40	7	M6×12	Φ5.2	40	860	1370	245
SCE25-B	LME25UU	67	26	38	76	51.5	41	12	54	11	M8×18	Φ6.8	50	980	1560	550
SCE30-B	LME30UU	76	30	39	78	59.5	49	15	58	10	M8×18	Φ6.8	58	1560	2740	760
SCE40-B	LME40UU	90	40	51	102	78	62	20	80	11	M10×25	Φ8.6	60	2150	4010	1700
SCE50-B	LME50UU	110	52	61	122	102	80	24	100	11	M10×25	Φ8.6	80	3820	7930	2950

Note 1) Dynamic load rating is based on the nominal life of 50km.
In case of 100km, C on the table need to be divided by 1.26
Ex) LM12's 50km basis dynamic load rating C = 410N
LM12's 100km basis dynamic load rating C₁₀₀ = 410 / 1.26 = 325.40N
Note 2) Based on the weight of resin retainer
Note 3) Dimension : mm

| SCE_W ALUMINUM CASE UNIT LONG |

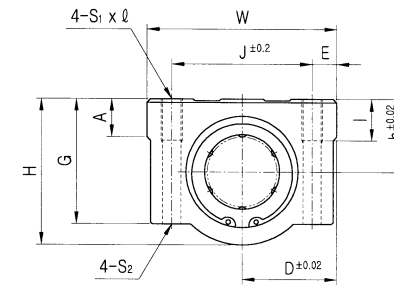
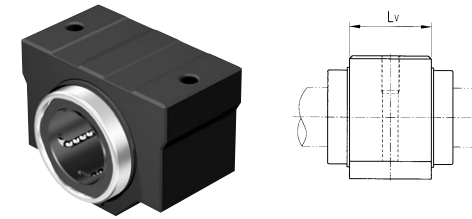


European Standard Aluminum Case Unit	SCE	20	W	UU	-	A	S
Nominal Shaft Diameter							
Long type (for high load)							
Seal							
Blank : No Seal U : One Side Seal UU : Both Side Seal							
Retainer							
Blank : Resin retainer(Standard) A : Steel retainer(High temperature)							
Ball type (by corrosion resistance)							
Blank : High carbon bearing steel ball (standard) S : Stainless steel ball							

PART NUMBER	L/B	h	D	W	H	G	A	J	E	S ₁ ×l	S ₂	K _w	L _w	BASIC LOAD RATING(N) DYNAMIC(C)	STATIC(C ₀)	WEIGHT (gf)
SCE8W-B	LME8U×2	11	17	34	22	18	6	24	5	M4×8	Φ3.4	42	58	410	800	98
SCE12W-B	LME12U×2	15	22	44	30	24.5	8	33	5.5	M5×10	Φ4.3	64	77	650	1180	232
SCE16W-B	LME16U×2	19	25	50	38.5	32.5	9	36	7	M5×12	Φ4.3	79	89	1230	2340	360
SCE20W-B	LME20U×2	21	27	54	41	35	11	40	7	M6×12	Φ5.2	90	106	1370	2740	490
SCE25W-B	LME25U×2	26	38	76	51.5	41	12	54	11	M8×18	Φ6.8	119	136	1560	3120	1100
SCE30W-B	LME30U×2	30	39	78	59.5	49	15	58	10	M8×18	Φ6.8	132	154	2490	5480	1525
SCE40W-B	LME40U×2	40	51	102	78	62	20	80	11	M10×25	Φ8.6	150	180	3440	8020	3400
SCE50W-B	LME50U×2	52	61	122	102	80	24	100	11	M10×25	Φ8.6	200	230	6110	15860	5920

Note 1) Dynamic load rating is based on the nominal life of 50km.
In case of 100km, C on the table need to be divided by 1.26
Ex) LM12's 50km basis dynamic load rating C = 410N
LM12's 100km basis dynamic load rating C₁₀₀ = 410 / 1.26 = 325.40N
Note 2) Based on the weight of resin retainer
Note 3) Dimension : mm

| SCE_V ALUMINUM CASE UNIT |



European Standard Aluminum Case Unit	SCE	20	V	UU	N	-	A	S
Nominal Shaft Diameter								
Compact type								
Seal								
Blank : No Seal U : One Side Seal UU : Both Side Seal								
New type								
Retainer								
Blank : Resin retainer(Standard) A : Steel retainer(High temperature)								
Ball type (by corrosion resistance)								
Blank : High carbon bearing steel ball (standard) S : Stainless steel ball								

PART NUMBER	L/B	h	D	W	H	G	A	J	E	S ₁ ×l	S ₂	L _v	BASIC LOAD RATING(N) DYNAMIC(C)	STATIC(C ₀)	WEIGHT (gf)
SCE8V-B	LME8UU	11	17	34	22	18	6	24	5	M4×8	Φ3.4	14.4	260	400	40
SCE12V-B	LME12UU	15	22	44	30	24.5	8	33	5.5	M5×10	Φ4.3	20.3	410	590	82
SCE16V-B	LME16UU	19	25	50	38.5	32.5	9	36	7	M5×12	Φ4.3	22.3	770	1170	122
SCE20V-B	LME20UU	21	27	54	41	35	11	40	7	M6×12	Φ5.2	28.3	860	1370	176
SCE25V-B	LME25UU	26	38	76	51.5	41	12	54	11	M8×18	Φ6.8	40.4	980	1560	400
SCE30V-B	LME30UU	30	39	78	59.5	49	15	58	10	M8×18	Φ6.8	48.4	1560	2740	570
SCE40V-B	LME40UU	40	51	102	78	62	20	80	11	M10×25	Φ8.6	56.4	2150	4010	1320
SCE50V-B	LME50UU	52	61	122	102	80	24	100	11	M10×25	Φ8.6	72.3	3820	7930	1900

Note 1) Dynamic load rating is based on the nominal life of 50km.
In case of 100km, C on the table need to be divided by 1.26
Ex) LM12's 50km basis dynamic load rating C = 410N
LM12's 100km basis dynamic load rating C₁₀₀ = 410 / 1.26 = 325.40N
Note 2) Based on the weight of resin retainer
Note 3) Dimension : mm