

# HIGH TEMPERATURE DRYERS SHE SERIES

Dryer with air-cooled  
aftercooler



**FRIULAIR**<sup>®</sup>  
Dryers



F R I U L A I R D R Y E R S



## **DRYER WITH AIR-COOLED AFTERCOOLER**

---

**Compact unit. Accepts hot air, up to 80°C, directly from the compressor.**

FRIULAIR is keen to respond to the special needs of its customers and has developed a new range of dryers with an integral aftercooler in order to remove water from pipelines. The dryer range can be selected when the compressed air inlet temperature is greater than 50° to 60°C, and the floor space is limited. There is no need for a separate free-standing aftercooler which saves both space and installation costs. The dryer has the same footprint as a standard unit with a small increase in height from model SHE 15. FRIULAIR has continued using its design philosophy to allow quick and easy access for routine maintenance.



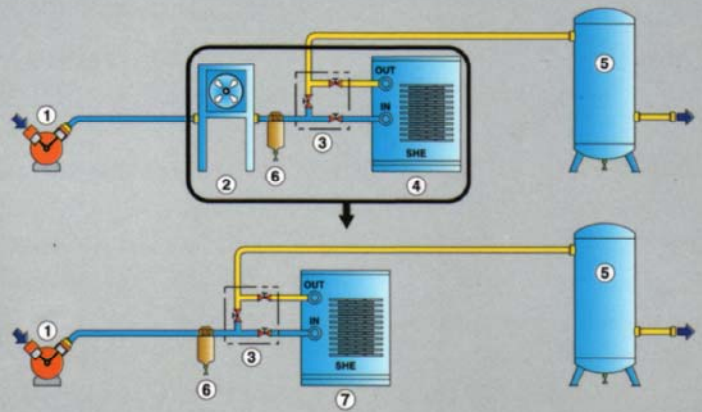
## **ELECTRONIC CONTROL**

For an optimal operation of its dryer, FRIULAIR has implemented a new series of reliable and precise electronic instruments with all functions being adjustable on the machine, thus ensuring constant performance even in variable operation conditions.



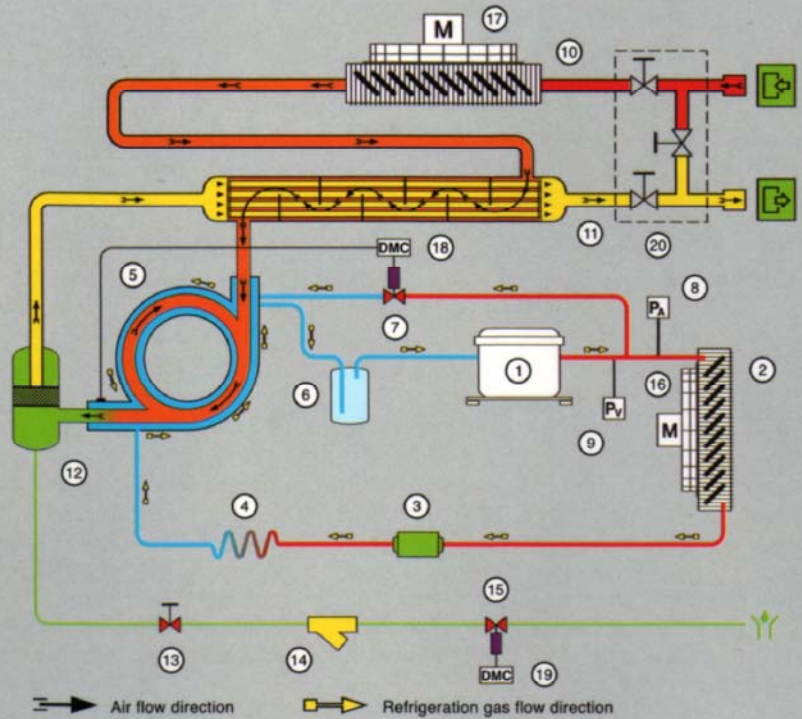
# INSTALLATION LAYOUT

1. Air compressor
2. FRIULAIR aftercooler
3. By-pass
4. FRIULAIR dryer
5. Receiver
6. Compressed air filter
7. FRIULAIR dryer SHE

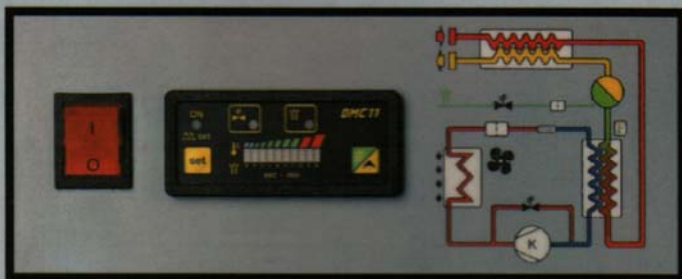


# AIR AND REFRIGERANT GAS FLOW DIAGRAM

1. Refrigeration compressor
2. Condenser
3. Dehydration filter
4. Capillary tube
5. Evaporator
6. Liquid separator (SHE 30-75 only)
7. Hot gas by-pass solenoid valve
8. Refrigerant pressure switch  $P_A$  (SHE 75 only)
9. Refrigerant pressure switch  $P_V$
10. Aftercooler unit (SHE 15-75 only)
11. Air-to-air heat exchanger
12. Condensate separator
13. Condensate drain service valve
14. Condensate strainer
15. Condensate drain solenoid valve
16. Condenser unit fan
17. Aftercooler unit fan (SHE 15-75 only)
18. DMC11 Air Dryer Controller
19. DMC11 (DewPoint) Controller probe
20. By-pass system (optional)



# DMC 11 Air Dryer Controller



The DMC 11 device controls the whole operation of the dryer and allows the calibration of the operating parameters. The activation of the hot-gas solenoid valve is driven by means of probe located at the end of the evaporator, while a cyclic electronic timer drives the condensate drain solenoid valve at regular intervals.

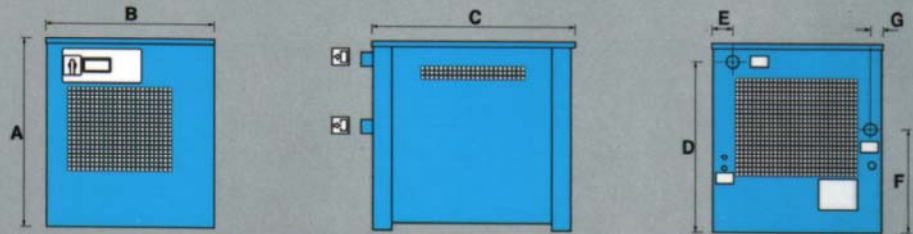
# SHE SERIES



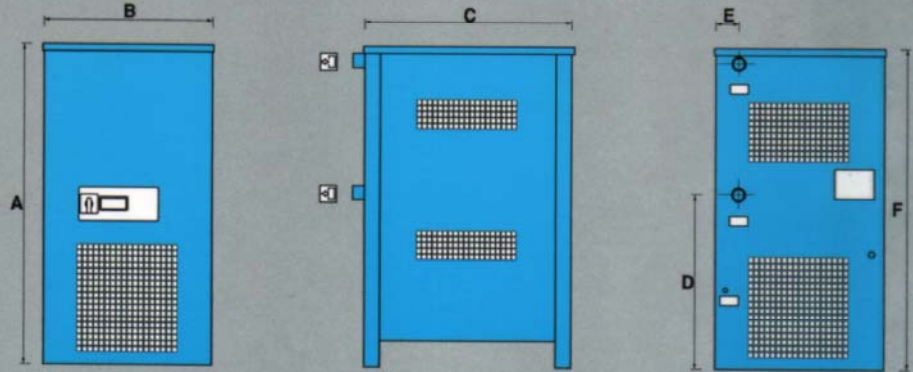


# TECHNICAL FEATURES OF THE DRYERS SHE 5-75

## SHE 5-10



## SHE 15-75



MODEL	FIT. FOR COMP	FLOW RATE	DIMENSION (mm.)							CONNECT.	POWER SUPPLY
	HP		Scfm	A	B	C	D	E	F	G	Ø
SHE 5	5/7.5	20	505	450	540	455	55	280	32	3/4"	1/230/50
SHE 10	10	35	505	450	540	455	55	280	32	3/4"	1/230/50
SHE 15	15	58	800	450	540	450	60	760		3/4"	1/230/50
SHE 20	20	85	800	450	540	450	60	760		3/4"	1/230/50
SHE 25	25	95	800	450	540	450	60	760		1"	1/230/50
SHE 30	30	131	1015	540	670	550	75	970		1"	1/230/50
SHE 40	40	152	1160	585	820	710	75	1110		1.1/4"	1/230/50
SHE 50	50	205	1160	585	820	710	75	1110		1.1/2"	1/230/50
SHE 60	60	230	1160	585	820	710	75	1110		2"	1/230/50
SHE 75	75	265	1160	585	820	710	75	1110		2"	1/230/50

Gas R.134a

Data refer to the performance of the air outcoming from the compressor (inlet 20°C and 1 bar) and at the following conditions:

-Inlet temperature : 80°C  
-Working pressure : 7 bar

-Ambient temperature : 32°C  
-Pressure DewPoint : 10°C

# FRIULAIR®

## Dryers

### HEADQUARTER AND MANUFACTURING

FRIULAIR s.r.l.  
Via Cisis, 36-es 352-Km 21-Strassoldo-Cervignano del Friuli (UD)-ITALY  
Tel. +39.(0431).939416 -Fax. +39.(0431).939419  
e-mail : com@friulair.com -www.friulair.com

### MANUFACTURING

FRIULAIR (THAILAND) CO.,LTD.  
Ind.Est. 49/5 Moo5, Tungskhla, Sriracha Chonburi 20230, Thailand  
Tel. +66.(38).400673, 400674 -Fax. +66.(38)400675  
e-mail : friulair@friulair.co.th -www.friulair.com

### JOINT VENTURE



FRIULAIR SOUTH AFRICA (PTY) LTD  
PO Box 14743 Farramere 1518, SOUTH AFRICA  
Tel. +27.(011).4259604 -Fax. +27.(011).4255605  
e-mail : friulair@global.co.za



C.A.G. Purification Inc.  
2871 Brighton Road, Suite 3, Oakville Ontario L6H 6C9, CANADA  
Tel. +1.(905).8299666 or 800 -Fax. +1(905).8298331  
e-mail : cagpure@interlog.com



PACIFIC CONTRACT ENGINEERING SDN BHD  
No.6, Jalan Mewah 2/2B Regalia Business Centre Taman Subang  
Mewah 47500 Petaling Jaya Malaysia Tel. 603-8024 5667, 603-8024 2781 Fax. 603-8024 6926  
e-mail : pce@tm.net.my



FRIULAIR PERKASA INDONESIA  
J1. Daan Mogot Km.10. No. 151, Pesing, Poglar, Jakarta 11710, Indonesia.  
Tel. +62.21.5448965, 5448956 Fax. +62.21.6198342  
e-mail : friulair@indosat.net.id



BELAIR TECHNOLOGIES LLC  
149 Rickey Blvd. Bear, DELAWARE 19701 U.S.A.  
Tel. 001.302.8325800 Fax. 001.302.8325900