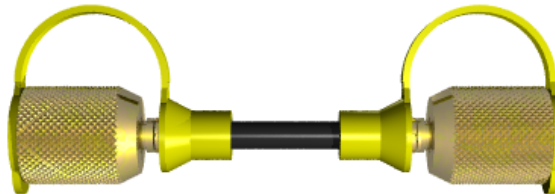


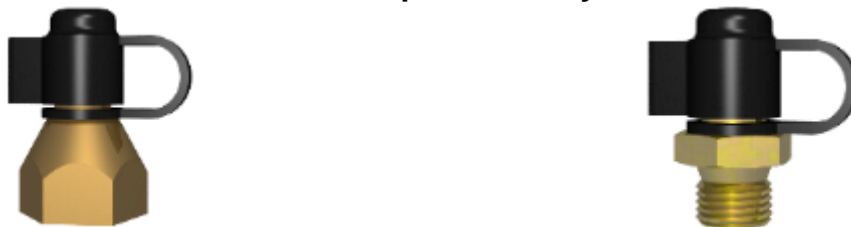
Hydraulic test couplings series: M16x2, M16x1,5, S12x1,5 and plug-in with
 - screw-in thread in accordance with DIN 3852, SAE J514 and others
 - solderless screwed pipe coupling plus cutting ring according to DIN 3902
 - straight coupling with drilling form W according to DIN 3861
 - sealing cone 24° including O-ring for drilling form W according to DIN 3861
 Accessories for all series available



Hydraulic high pressure hoses with nominal diameter DN2
 for hydraulic test couplings with an abundant selection of connectors

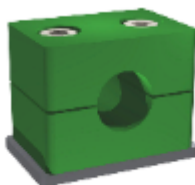


Test valves for pneumatic brake units in accordance with DIN /ISO 3583
 - steel or brass
 - with or without sieve
 - with rubber cap or butterfly nut

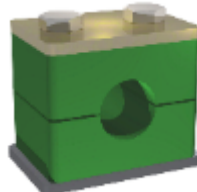


clamps according to DIN 3015

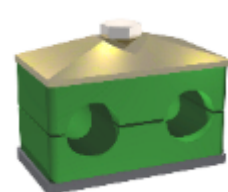
light-series



heavy-series



double-series

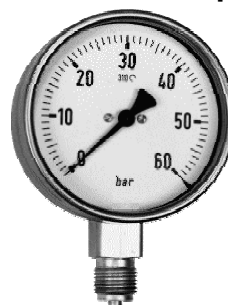


SPRADOW Test Box



Also available for
 6 pressure
 gauges, the
 content is
 adaptable to your
 specifications

pressure gauge



with BAR or BAR/PSI
 indicator, at different
 pressure stages